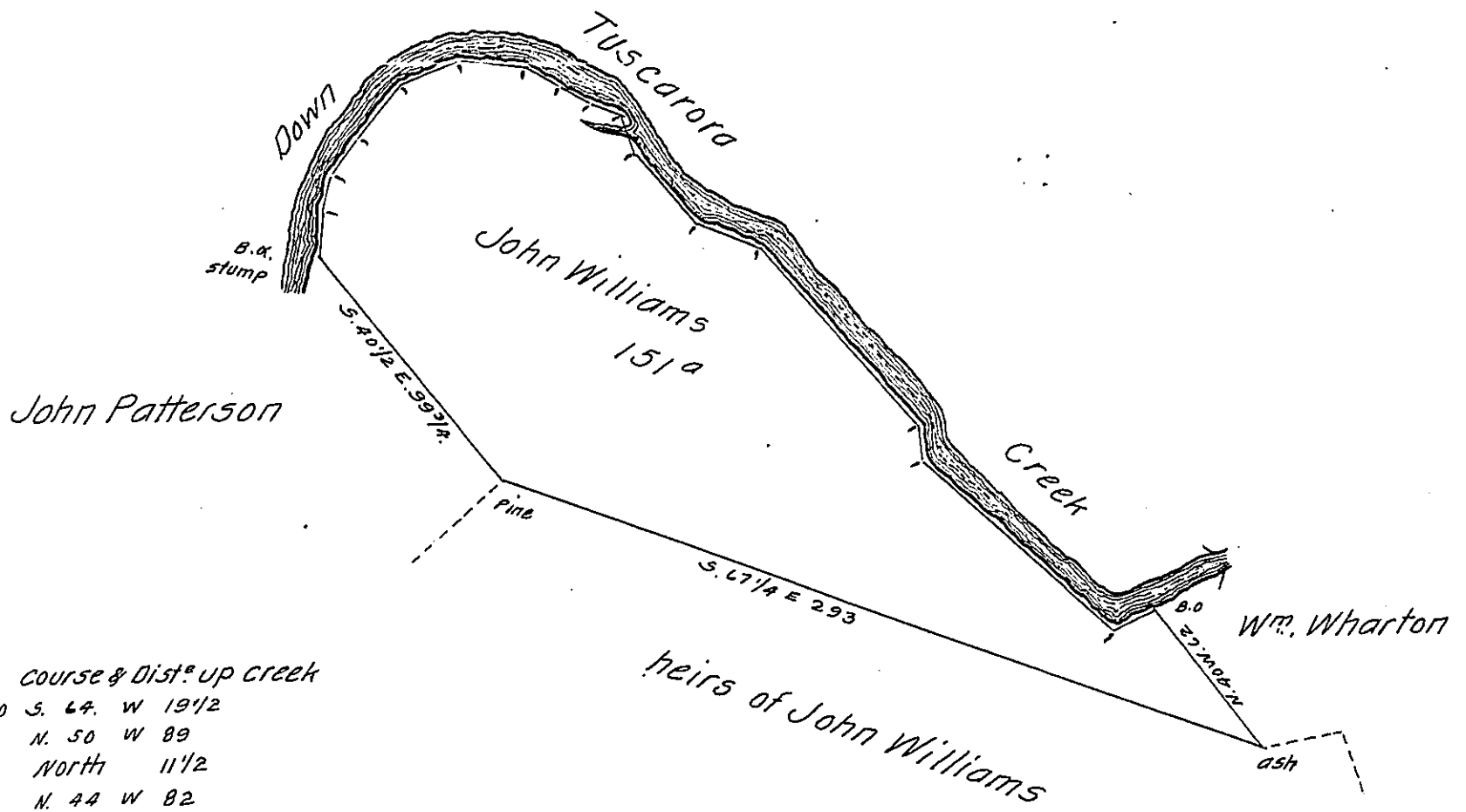


FORM NO. 1.



Course & Dist<sup>o</sup> up creek  
 B.O. S. 64. W 19 1/2  
 N. 50 W 89  
 North 11 1/2  
 N. 44 W 82  
 N. 67 W 25  
 N. 43 W 54  
 N. 73 W 47  
 N. 62 W 26  
 S. 35 W 38 1/2  
 S. 8 W 21 B.O.  
 stump

Draught of one hundred and fifty one Acres with six pr. Ct. in Turbett Township Mifflin (formerly Cumberland) County. appears to have - surveyed 14<sup>th</sup> Ap<sup>l</sup> 1788. In persuance of a warrant to John Williams dated 17 Jan<sup>y</sup> 1788. Said to Contain 299<sup>a</sup> 87<sup>g</sup> &c. the above resurveyed 8<sup>th</sup> Jan<sup>y</sup> 1824.

Note in the original survey was included a survey of 127<sup>a</sup> 4<sup>g</sup> which appears to have been surveyed in Persuance of an order of Survey No 3776- granted to John Williams on the 29<sup>th</sup> May 1767- for 100<sup>ac</sup>

To Gab<sup>l</sup>. Hiester J<sup>r</sup>. Esquire } W<sup>m</sup>. M<sup>c</sup>. Alister D. S.  
 Surveyor Gen<sup>l</sup>. of Pennsylvania }

IN TESTIMONY that the above is a copy of the original remaining on file in the Department of Internal Affairs of Pennsylvania, made conformably to an Act of Assembly approved the 16th day of February 1833, I have hereunto set my hand and caused the Seal of said Department to be affixed at Harrisburg, this first day of October 1907

*Henry Howard*  
 Secretary of Internal Affairs.